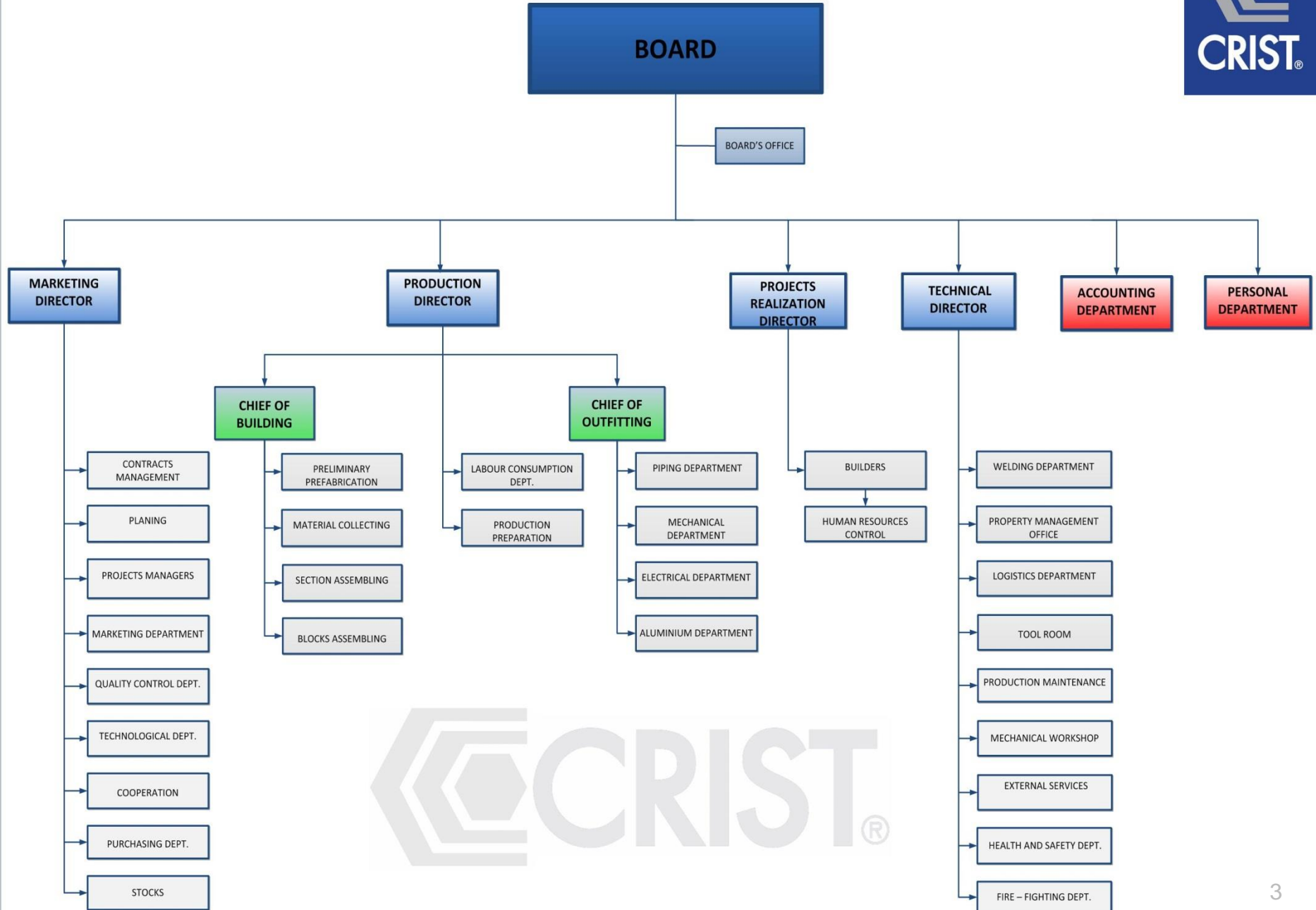


CRIST®

General Info

- *Established in 1990 by two engineers: Mr Ireneusz Ćwirko and Mr Krzysztof Kulczycki*
- *The owners have been in the shipbuilding business for over 40 years*
- *It's a company experienced in: harbour engineering, offshore structures, civil engineering, fully or partly outfitted vessels and many, many more*
- *At present, the yearly output of processed steel is around 100 000 tonnes*
- *20 years of activity – 300 sea units built*
- *It's one of the major shipbuilders in Poland*
- *It's a fully private company, without any political influence*
- *Ca. 1000 people employed*
- *Our success lies in our staff – engineers and designers are highly qualified and very experienced*
- *In 2009 Crist bought the main buildings and equipment of Gdynia Shipyard*
- *Crist plans to enter the Stock Exchange in 2013*

ORGANISATION CHART OF CRIST S.A.



Plant No. 2 - Gdynia

- *Shipbuilding*
- *Sea structures and offshore units*
- *Steel constructions and harbour engineering*
- *Hydrotechnical structures*
- *Specialist vessels, including platforms and units for wind farms assembly at sea*
- *Elements of wind tower structures*



Production Potential

- Gantry crane – lifting capacity: 1000 tonnes, span: 153 m



One of the largest gantry cranes on the coast of Baltic Sea

Production Profile

Our production profile currently includes:

1. Jack-Up Vessels / Barges

2. Vessels

- fishing vessels*
- tugs*
- ferries*
- container vessels*
- research vessels*

3. Off-shore constructions

- PSV*
- AHTS*
- platforms*
- sub-sea constructions*
- foundations for wind turbines*

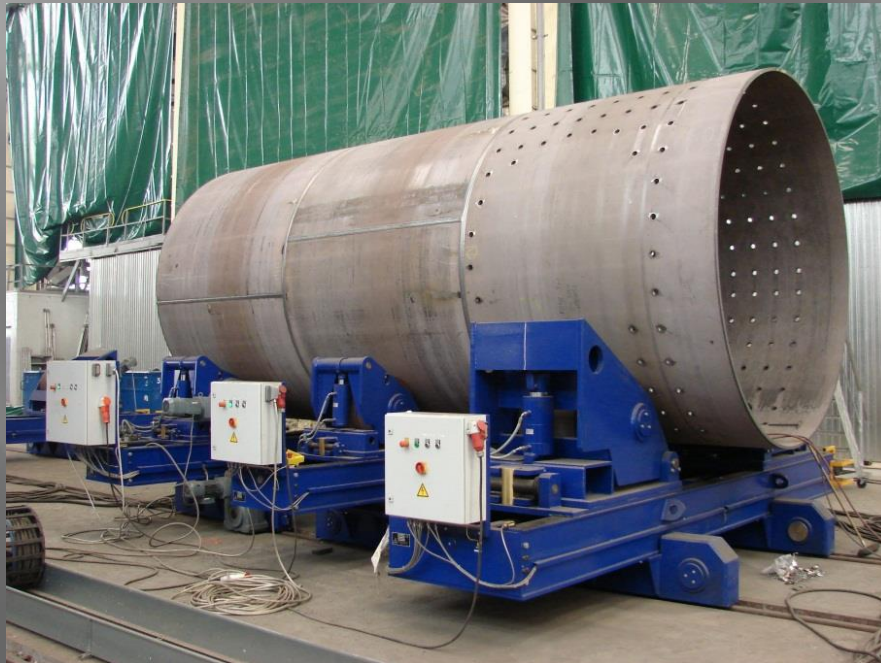
4. Hydrotechnical Constructions

- gates*
- pontoons*



Production Potential

- *Assembly line for shipbuilding of different kinds of vessels*
- *Ship section prefabrication line consisting of flat section assembly and welding lines*
- *Modern production line for rolling and welding big sized monopiles and other rolled sections*



Project Under Construction

NB 130 – HLJV VIDAR



Main dimensions:

- Loa = 140,50 m
- Lpp = 133,34 m
- B = 41 m
- T = 6,60 m

ACHIEVEMENTS

JACK-UP BARGE „THOR”



Main dimensions:

- Loa = 86,20 m
- B = 40 m
- H = 6 m

ACHIEVEMENTS



HEAVY LIFT JACK UP VESSEL „INNOVATION”



Main dimensions:

- Loa = 147,50 m
- B = 42 m
- D = 11 m

ACHIEVEMENTS

*B34/3 – Purse/Danish
seiner*



*LOA = 36,50 m
B = 9,25 m*

B72 – Live fish carrier



*LOA = 71,9 m
B = 15 m*

*B34/2 – Purse/Danish
seiner*



*LOA = 34,99 m
B = 9,25 m*

ACHIEVEMENTS

IMOR - Research Vessel



Main dimensions:

Loa = 32,5 m

B = 10,5 m

Max. draft = 2,25 m

H-15 Harbor Tug



Main dimensions:

➤ Loa = 14,95 m

➤ B = 5,5 m

➤ Bollard pull 12 tonnes

COMBI DOCK and three sister vessels



Main dimensions:

Loa = 162 m

B = 25,4 m

Docking draft = 11 m 12

ACHIEVEMENTS

AHTS – Anchor Handling Tug Supply Vessels



B490/2 – NB30 – Normand Ranger

B490/3 – NB31 – Normand Prosper

SIEM Aquamarine – NB 331

SIEM Diamond – NB 333

Rem Odin – NB 322

Rem Viking – NB 324

ACHIEVEMENTS

PSV – Platform Supply Vessels

- *Viking Queen*
- *Seven Sisters*
- *Ocean Endurance*



Loa – 103,70 m
Lbp – 96,80 m
B – 19,70 m
Speed – 16,0 knots



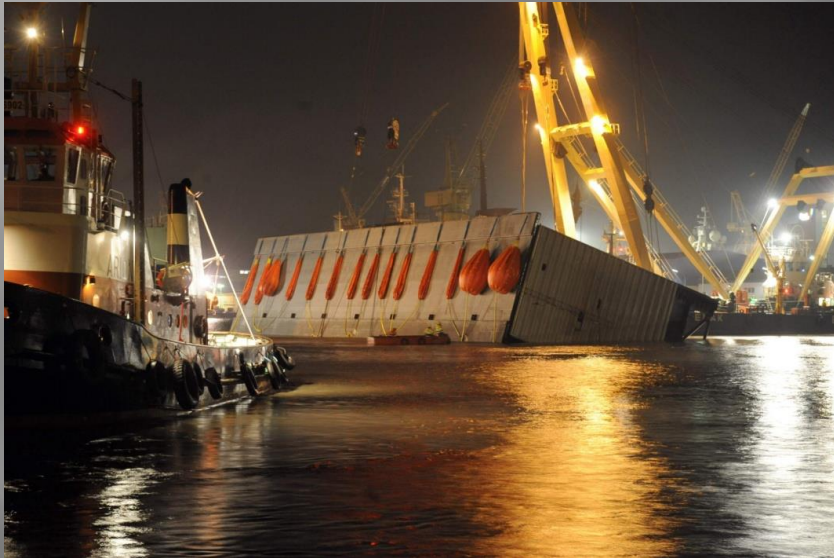
Loa – 92,00 m
Lbp – 84,00 m
B – 21,00 m
Speed – 15,5 knots

Loa – 73,40 m
Lbp – 64,00 m
B – 16,60 m



ACHIEVEMENTS

Three GATES for Lock in Bremerhaven



Main dimensions:

- $Loa = 57\text{ m}$
- $B = 11,78\text{ m}$
- $H = 21\text{ m}$

Pontoon KURT – P493



Main dimensions:

- $Loa = 49,80\text{ m}$
- $B = 3,25\text{ m}$
- $H = 21\text{ m}$

Our Partners and Subcontractors

<i>From Germany :</i>	<i>Beluga Hochtief, Arge Kaiserschluese, Lloyd Werft, Hochtief, Meyer Werft, Bilfinger Berger, J.J. Sietas Werft, Nessewerft Leer</i>
<i>From Norway:</i>	<i>Kleven Verft AS, Flekkefjord Slipp & Maskinfabrikk AS, Karmsund Maritime AS, Leirvik Module Technology, Larsnes Mek. Verksted, Westcon AS, Statoil, Simek AS, Hamworthy Gas Systems AS</i>
<i>From Finland:</i>	<i>Aker Finnyards</i>
<i>From Sweden:</i>	<i>MacGregor</i>
<i>From France:</i>	<i>Piriou</i>
<i>Frome Netherlands:</i>	<i>Bodewes, Damen, Maaskant and Hoekman Shipyard</i>
<i>From Denmark:</i>	<i>Karstensen Shipyard</i>
<i>From Poland:</i>	<i>Polish Maritime Institute, Sport Club "Wigry", Hochtief Polska, Muehlhan, Fast, Safe, Northern Shipyard, Nauta Shipyard, Remontowa Shipyard, Alkor Shipyard, Stogda</i>

Contact

CRIST S.A.

MAIN OFFICE

80-867 Gdańsk, Swojska 12,
Poland

phone: +48 58 769 33 00

fax: +48 58 769 33 01

e-mail: crist@crist.com.pl; biuro@crist.com.pl

www.crist.com.pl

CRIST S.A. can be seen as a reliable and cooperative partner as we offer:

- *proper understanding of customer needs,*
- *high quality of our products and services,*
- *experienced staff,*
- *ability of solving technical tasks,*
- *on time deliveries,*
- *favourable location of production plants.*



CRIST

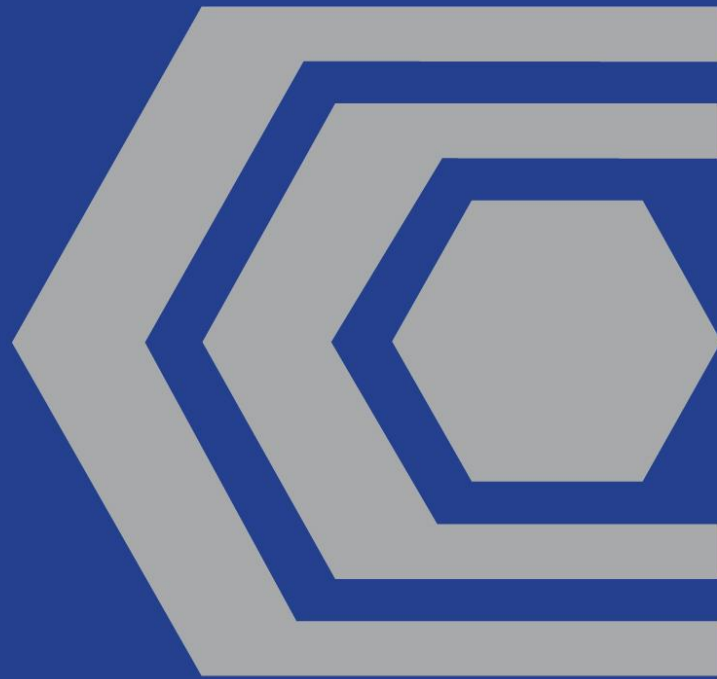


CRIST



CRIST

Thank you
for your attention



CRIST®