



MODERN ENGINEERING COMPANY

Nelton facts

Nelton has experienced steady growth as a result of strong support for shipyards and true focus on professional designing of ships and floating objects.



LOCATION

GDAŃSK & SZCZECIN



FOUNDED

1999



STAFF

71 QUALIFIED ENGINEERS



OWNERSHIP STRUCTURE

52%



ARTUR GRUHLKE

48%

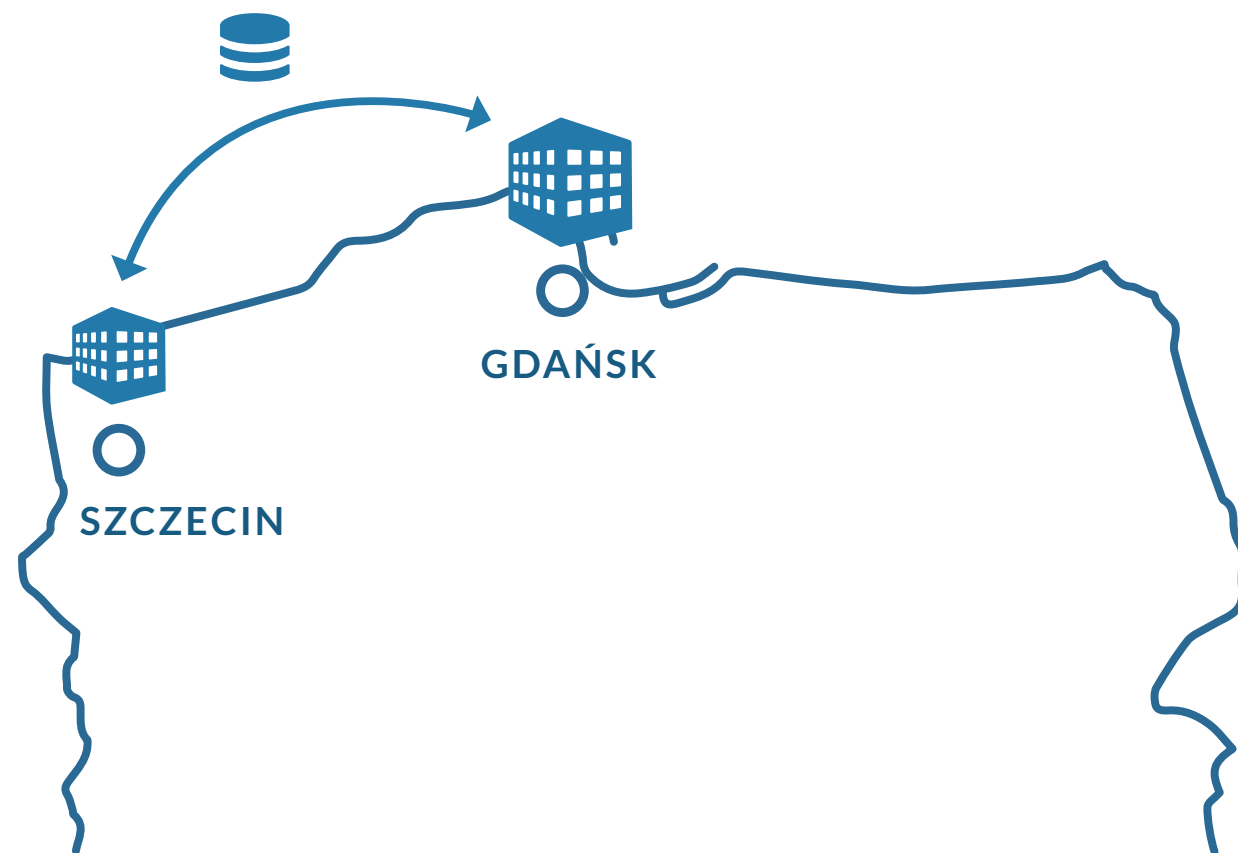
ANDRZEJ MASZTALEWICZ

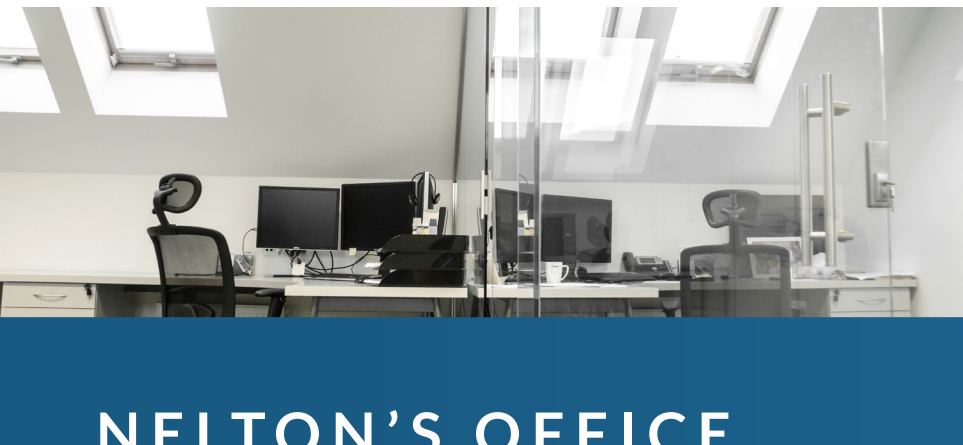
Nelton offices

We operate in two offices with headquarters held in Gdańsk and subdivision in Szczecin.

GDAŃSK HEADQUARTERS	SZCZECIN SUBDIVISION
800 m ²	220 m ² (500 m ²)
3 conference rooms	1 conference room
Smart functional organisation	
Excellent social conditions	
Ergonomic working place	
 44	 21
 6 in the side team	

INTEGRATED DATABASE SYSTEM

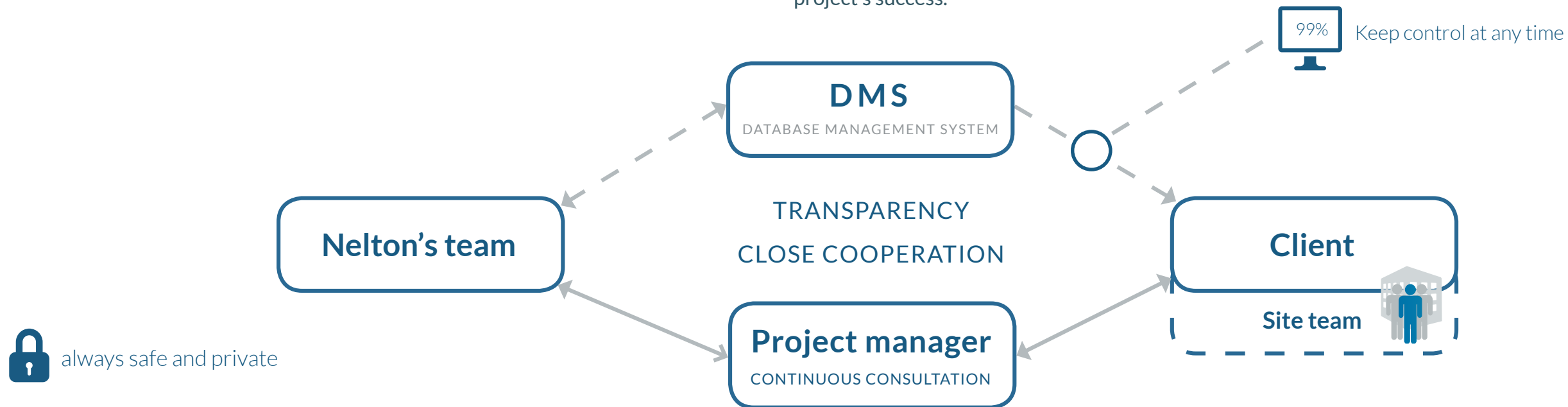




NELTON'S OFFICE

Working together

We have proven that communication and transparency is crucial for project's success.



Site team

We often send a special team to work in our client's office so that both companies can find the best way of cooperation.



Keep control

In order to embrace transparency, we have developed a special web application, which enables checking project progress anytime.



We are proud to be partner (partly owned by Nelton) with **itmore**, a company that takes care of our IT needs and helps developing software, that allows us to increase efficiency and solve common project management problems.

WWW.ITMORE.PL



Companies group

One of the most significant indicator of Nelton growth is shareholding in 2 companies with a strong position on market.



COUNTRY
GERMANY

SPECIALISATION
DESIGN & ENGINEERING

ESTABLISHED IN
1979



COUNTRY
POLAND

SPECIALISATION
DESIGN & ENGINEERING

ESTABLISHED IN
1999



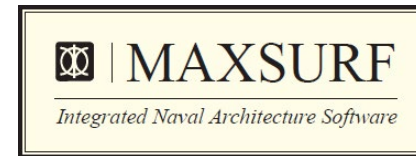
COUNTRY
POLAND

SPECIALISATION
IT SUPPORT & SOFTWARE

ESTABLISHED IN
2008

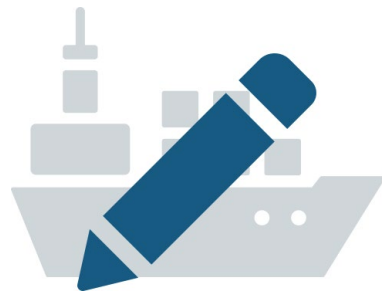
Software used

Our specialists keep high quality standards of executed projects using modern software.



Services

Nelton's key distinguishing characteristics are specialized knowledge and a long field experience.



MARINE AND OFFSHORE DESIGN

- CONCEPTUAL DESIGN
- CONSULTANCY
- CLASS DRAWINGS
- DETAIL ENGINEERING
- CALCULATIONS



MECHANICAL ENGINEERING

- MECHANISM AND MACHINE DESIGN
- CONTROL ENGINEERING
- HYDRAULICS AND PNEUMATICS
- ENGINEERING AND PRODUCT DESIGN
- THERMODYNAMICS

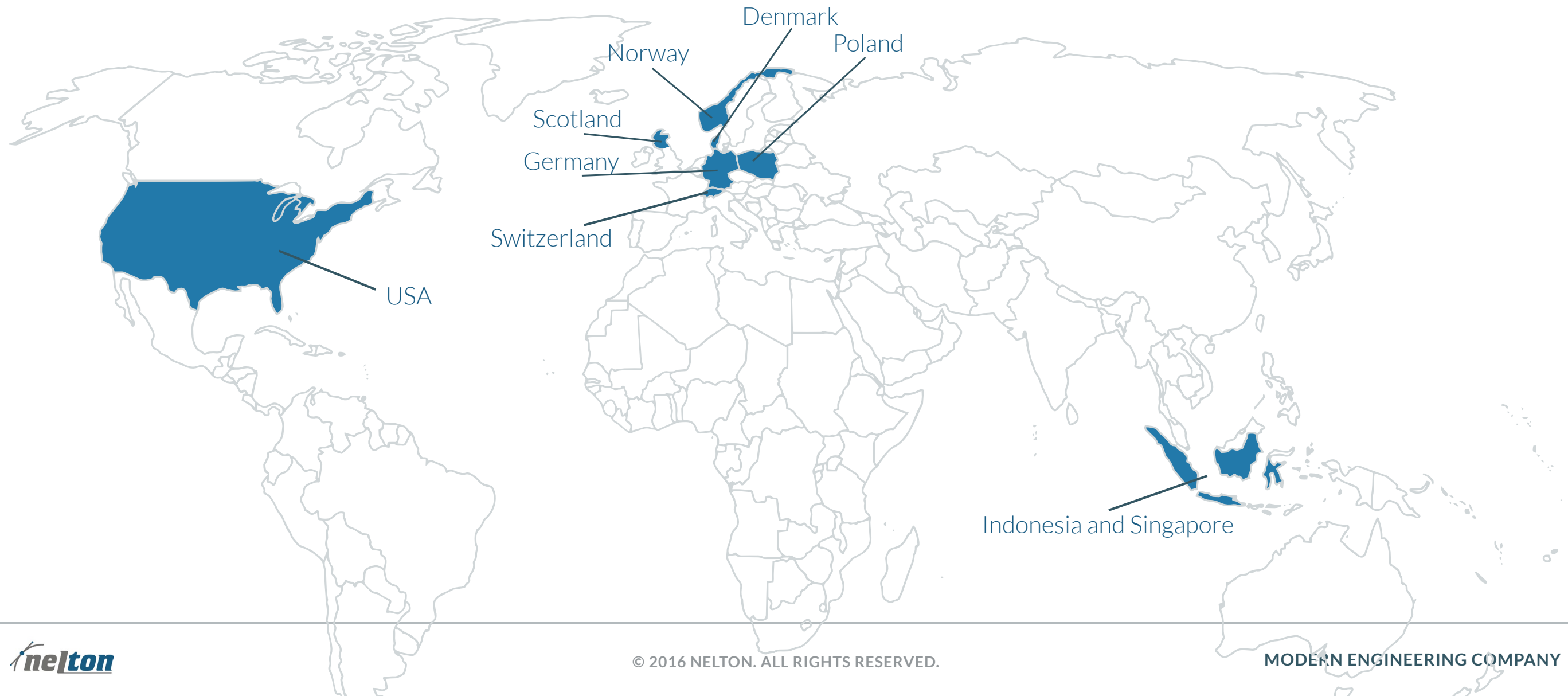


SPECIAL TASKS

- INNOVATIVE PROJECTS
- BRAVE CONCEPTS
- UNUSUAL CHALLENGES
- SEIZE THE OPPORTUNITY

International range

We've been delivering the best design and engineering solutions to the whole world.



Nelton's experience



Since 1999 we've successfully completed over 100 various marine projects.



WINDSERVER

WIND FARM SERVICE VESSEL TRIMARAN

Windserver

SPECIFICATION

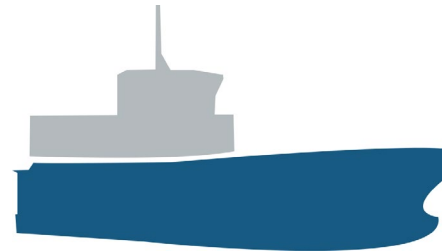
length	24 m / 30 m
beam	9,5 m / 12 m
constructed in	Poland/Norway



Features and challenges



Windfarm service



Aluminium hull



Complex foil calculations

PROJECT - WINDSERVER





STEEL SUPER YACHTS

EXPEDITION SUPPORT VESSEL

Super yachts

SPECIFICATION

length overall	107/116 m
breadth	18 m
main engines	azimuth propellers 2x2200 kW
accommodation	66 people



Features and challenges



Helideck & Hangar



Multiple smaller vessels onboard

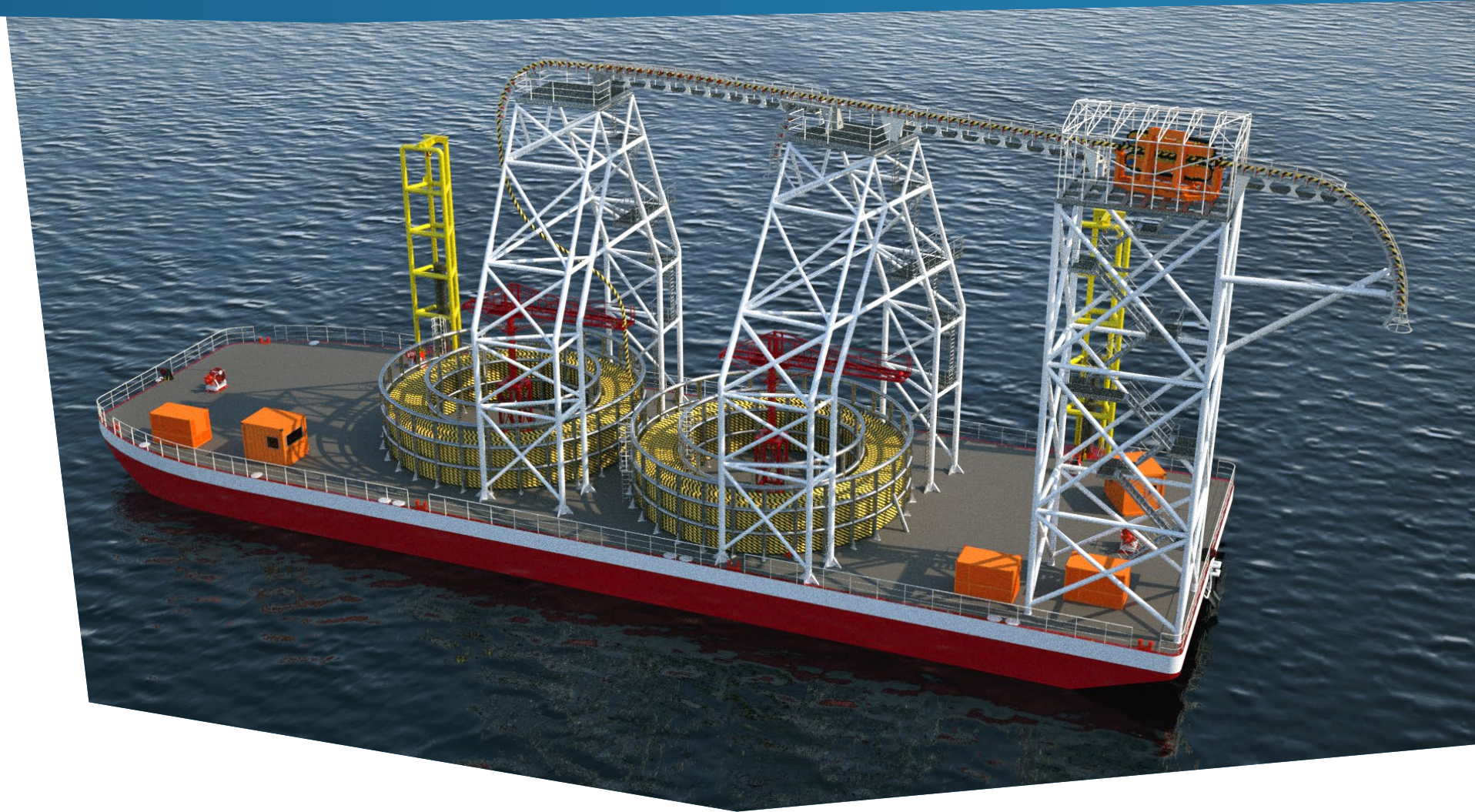


Shipowner's specific needs



CABLE PROTECTOR

AND CABLE STORAGE BARGE



Cable Storage Barge

SPECIFICATION

length	70,1 m
breadth	21,34 m
depth	3,38 m

Features and challenges



Underwater cable connection



High voltage with big radius



Challenging cable delivery system

SHIP
OF THE
YEAR
AWARD



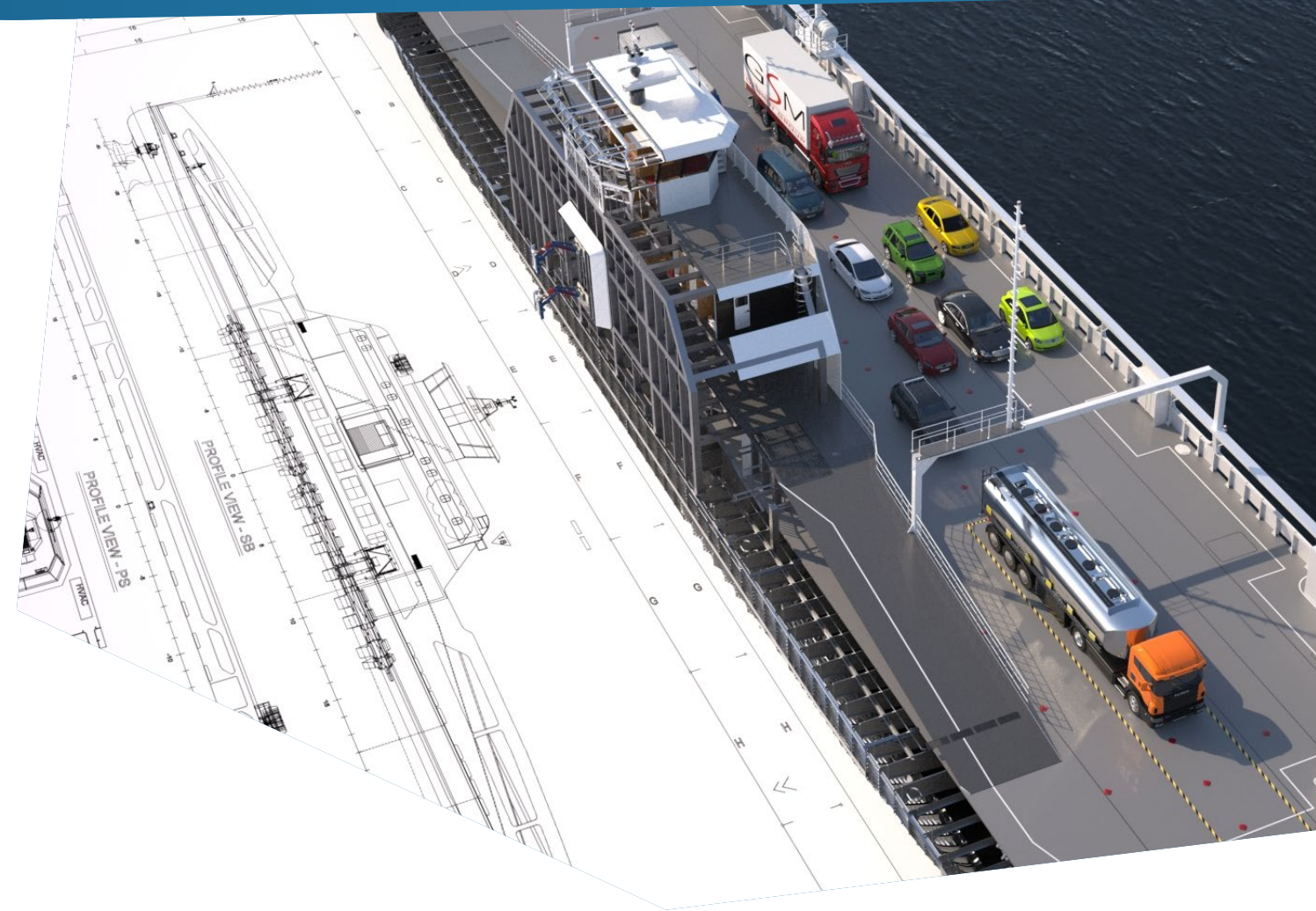
ZEROCAT

FULLY ELECTRIC-POWERED FERRY

ZeroCat

SPECIFICATION

length	80 m
beam	21 m
operating speed	10 knots
batteries	lithium ion 1 MWh



Features and challenges



Ship of the year 2014

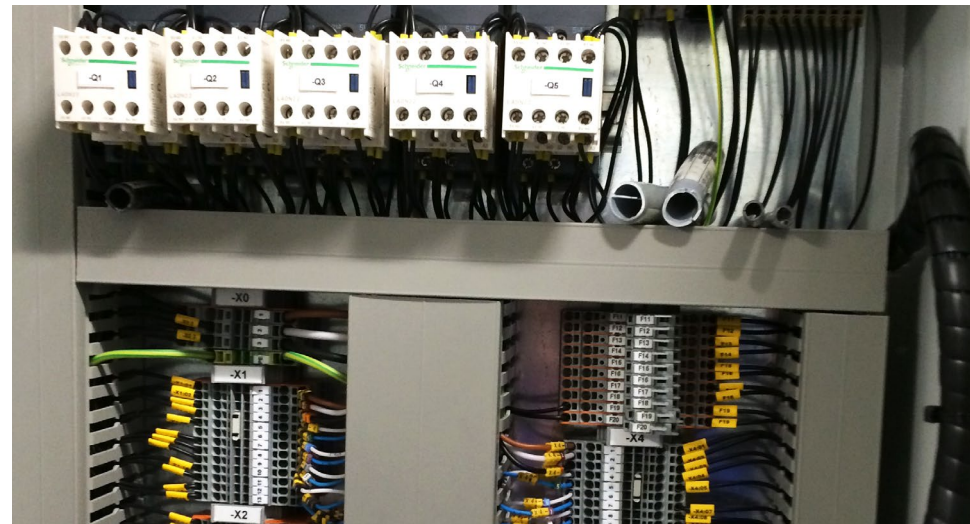


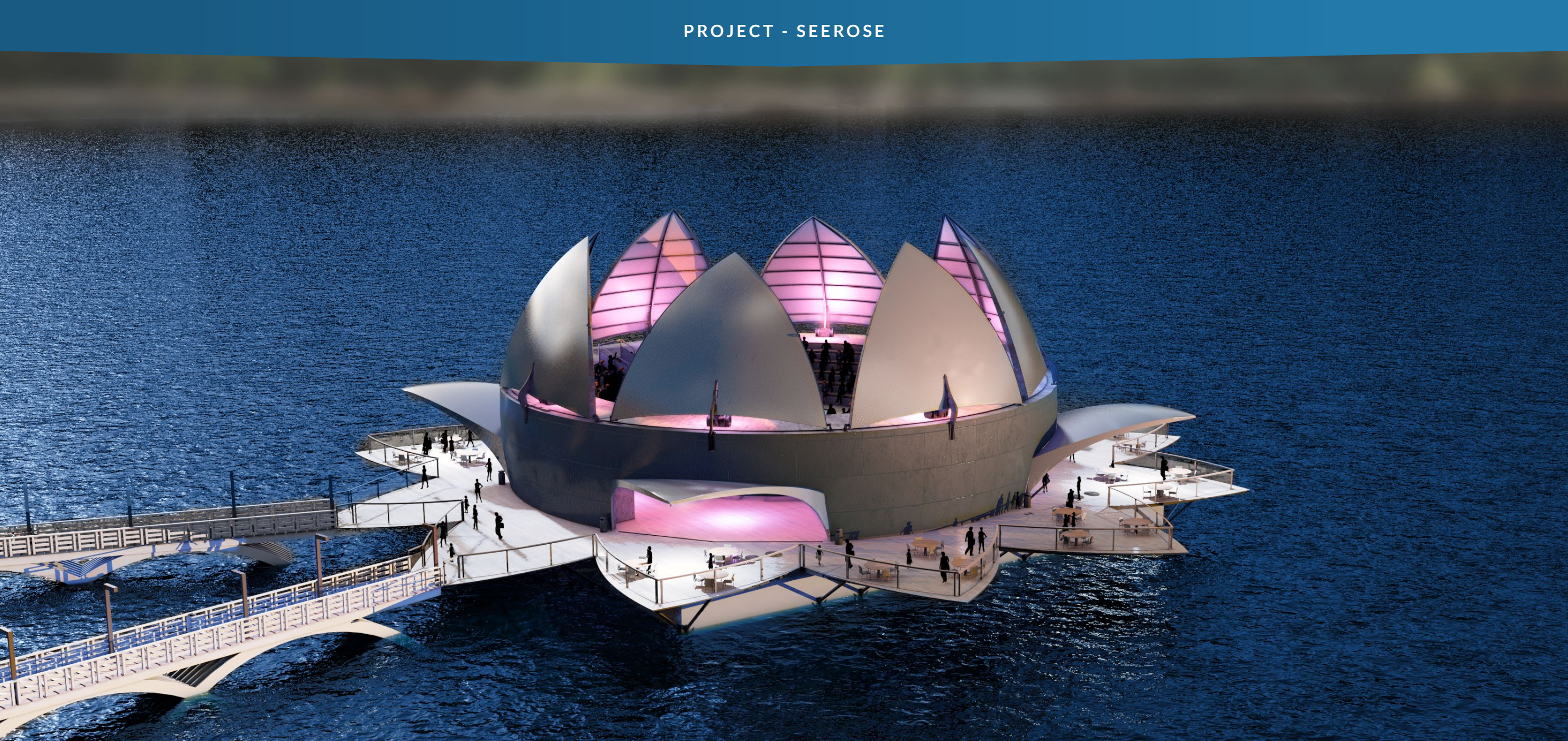
First fully electric-powered



Environmentally friendly

PROJECT - ZERO CAT





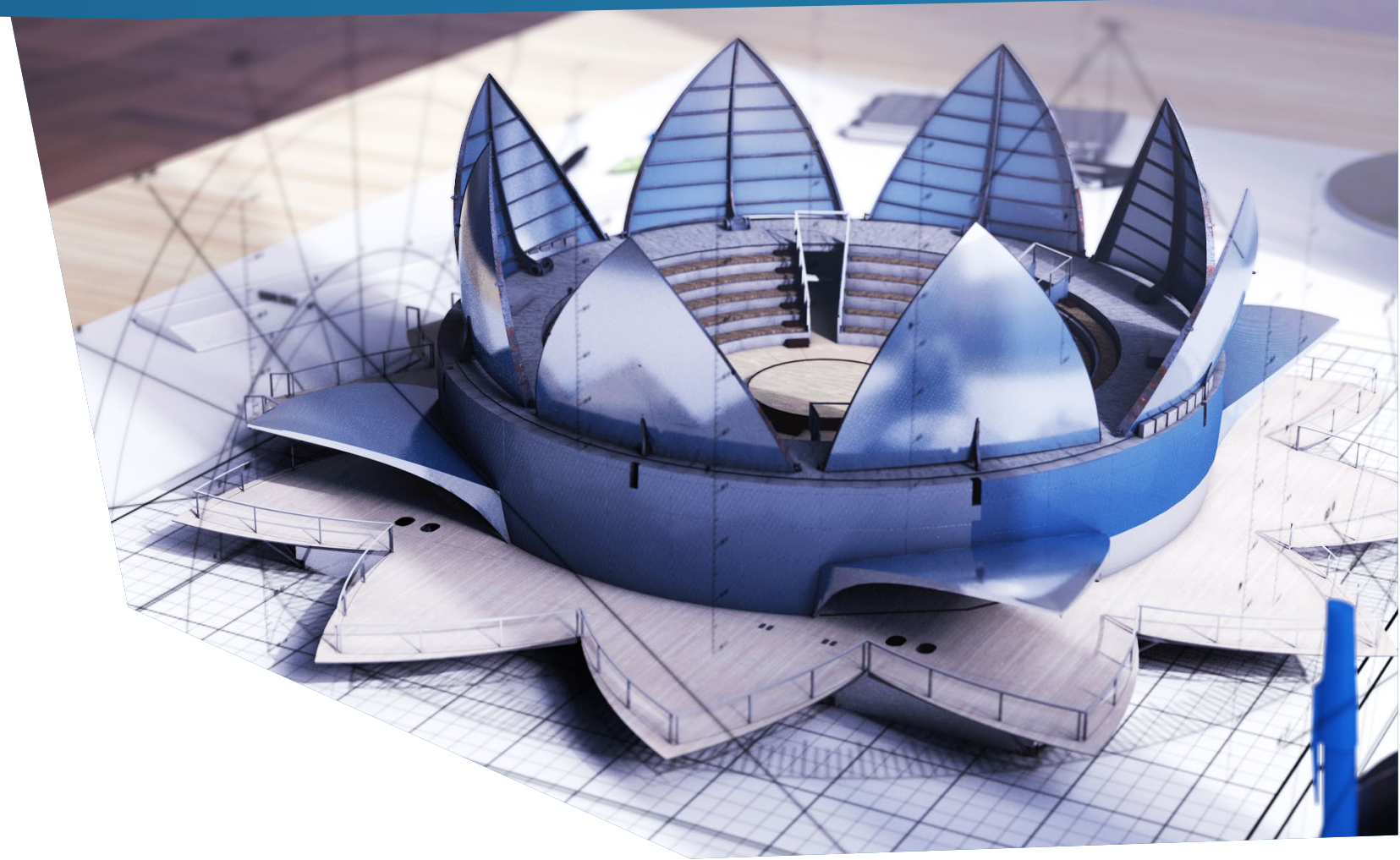
SEEROSE

FLOATING EVENT PLATFORM

SeeRose

SPECIFICATION

length	48 m
breadth	48 m
height	16 m
capacity	700 people



Features and challenges



Floating event platform

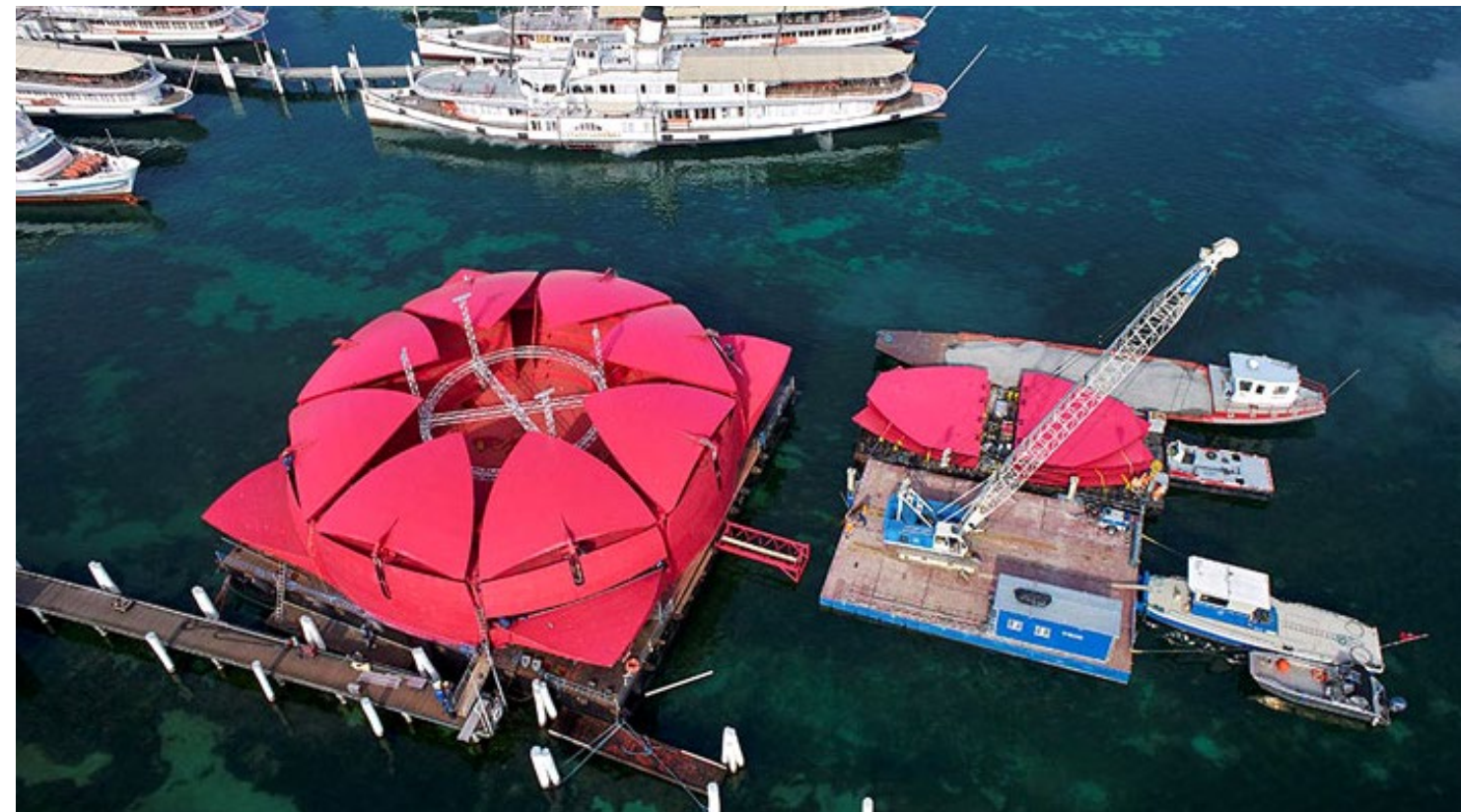
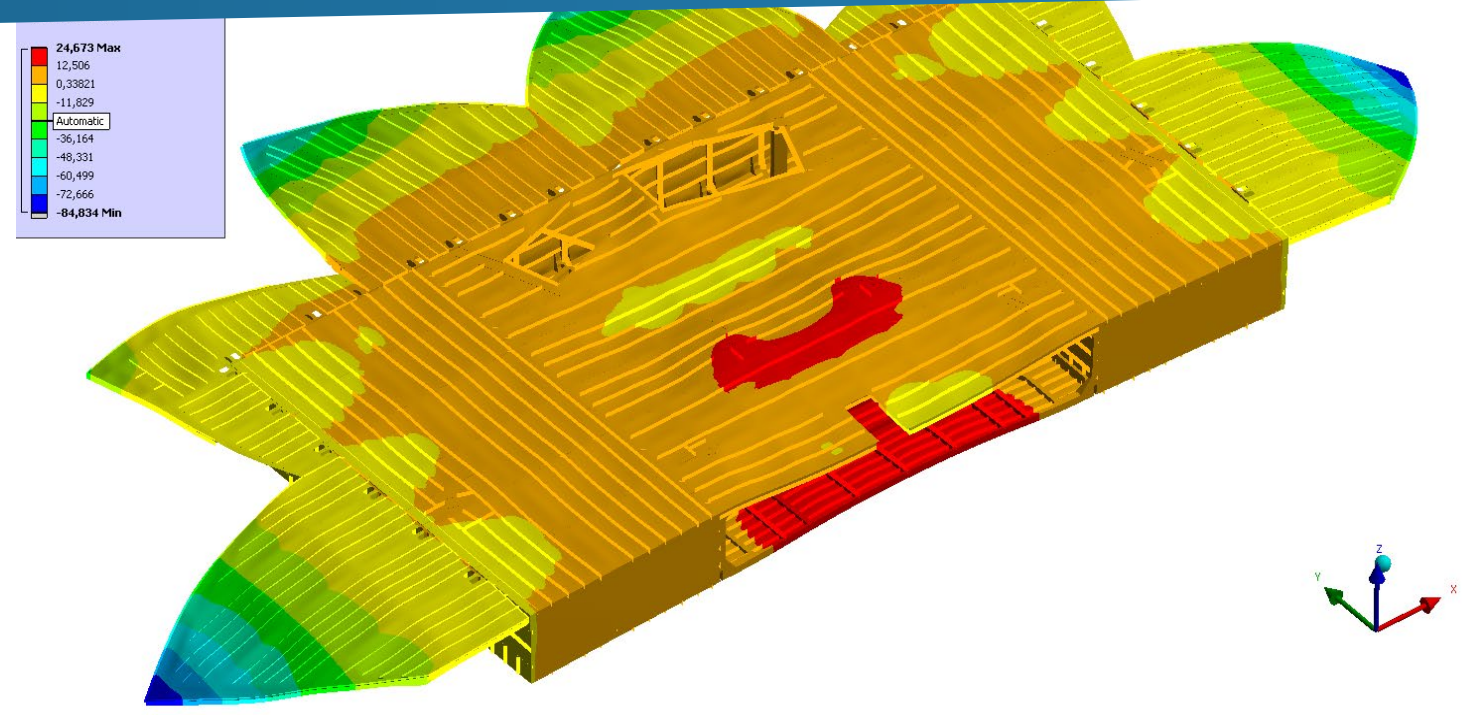
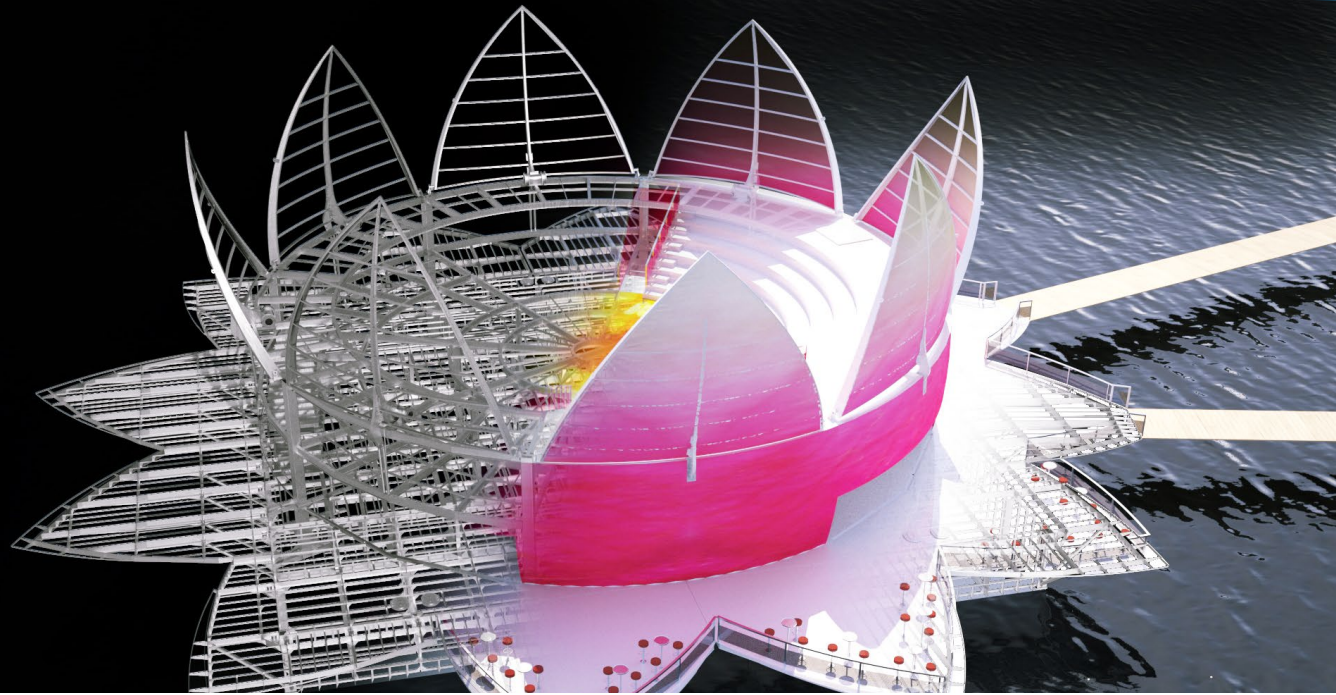


Foldable leaves



Advanced assembly

PROJECT - SEEROSE





SBM INSTALLER
Dive & Construction vessel / Keppel Shipyard



OLYMPIC COMMANDER
Field supply & construction vessel / Kleven Maritime AS



SEABED SUPPORTER
Multipurpose offshore vessel / Fjellstrand AS



FUGRO SYNERGY
Light Drill ship / Bergen Yards Halsnoy AS



NORSHORE ATLANTIC
Subsea support & construction vessel / PT. Batamec Shipyard



REM PIONEER
Subsea support & construction vessel / Kleven Maritime AS

OFFSHORE VESSELS

MORE THAN 40 PROJECTS INVOLVED

Offshore vessels

PLATFORM SUPPLY

SEISMIC

ANCHOR HANDLING

ROV

DRILLING

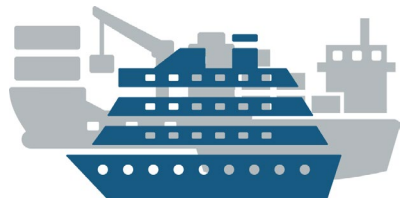
CONSTRUCTION SUPPORT

WELL INTERVENTION

DIVING SUPPORT



Features and challenges



Diverse projects



Highly complex projects



Used globally



AIDADIVA / Meyer Werft / 2007



CELEBRITY ECLIPSE / Meyer Werft / 2010



NORWEGIAN BREAKAWAY / Meyer Werft / 2012



DISNEY FANTASY / Meyer Werft / 2012



ANTHEM OF THE SEAS / Meyer Werft / 2013



QUANTUM OF THE SEAS / Meyer Werft / 2014

CRUISE LINERS

ALMOST 30 PROJECTS INVOLVED

Cruise liners

WORK SCOPE

- ◇ structure design
- ◇ machinery piping arrangements
- ◇ arrangements
- ◇ accommodation piping arrangements
- ◇ outfitting engineering
- ◇ electrical design



Engineering work loads between 25 000 - 45 000 hours per ship.

MORE EXPERIENCE ?

Students and interns are most welcomed
in our company.



Thank you

FOR MORE INFORMATION PLEASE VISIT OUR WEBSITE

www.nelton.pl



WWW.NELTON.PL