



EMSHIP WEEK in La Spezia, Italy, Feb 2014



**SHIP DESIGN GROUP** *We improve shipbuilding*  
NAVAL ARCHITECTS . MARINE ENGINEERS . CONSULTANTS

## ***GENERAL INFORMATION***

- **INDEPENDENT PRIVATE COMPANY**
- **ROMANIAN OWNERSHIP**
- **ESTABLISHED IN 1994**
- **55 HIGHLY EDUCATED DESIGNERS  
(BACHELOR, MASTER AND DOCTORAL  
DEGREE)**
- **MEMBER OF “ANCONAV”** (*Romanian  
Shipbuilders Association*)





**SHIP DESIGN GROUP** *We improve shipbuilding*  
NAVAL ARCHITECTS . MARINE ENGINEERS . CONSULTANTS

## ***FIELDS OF ACTIVITY***

- **SHIP DESIGN:**
  - CONCEPT, BASIC AND DETAILED
  - COMPLETE PROJECTS
- **RESEARCH**
- **CONSULTANT**
- **EXPERT**
  
- **MAIN SKILLS:**
  - OFFSHORE SUPPORT VESSELS
  - NON-CARGO AND SPECIAL SHIP
  - RIVER GOING SHIPS





**SHIP DESIGN GROUP** *We improve shipbuilding*  
NAVAL ARCHITECTS . MARINE ENGINEERS . CONSULTANTS

## REFERENCES

### SMALL CRAFTS – PLEASURE, PATROL, WORKBOAT





**SHIP DESIGN GROUP** *We improve shipbuilding*  
NAVAL ARCHITECTS . MARINE ENGINEERS . CONSULTANTS

## REFERENCES

### RIVER PASSENGERS SHIPS





**SHIP DESIGN GROUP** *We improve shipbuilding*  
NAVAL ARCHITECTS . MARINE ENGINEERS . CONSULTANTS

## REFERENCES

### RIVER GOING VESSELS

- **PUSHERS**
- **SELF-PROPELLED BARGES**
- **SPECIAL PURPOSE**





**SHIP DESIGN GROUP** *We improve shipbuilding*  
NAVAL ARCHITECTS . MARINE ENGINEERS . CONSULTANTS

## REFERENCES

### TUGS

- CONVENTIONAL
- ASD
- TRACTOR
- VOITH





**SHIP DESIGN GROUP** *We improve shipbuilding*  
NAVAL ARCHITECTS . MARINE ENGINEERS . CONSULTANTS

## REFERENCES

### AHTS VESSELS

- 145 TBP / 180 TBP / 300 TBP







**SHIP DESIGN GROUP** *We improve shipbuilding*  
NAVAL ARCHITECTS . MARINE ENGINEERS . CONSULTANTS

## REFERENCES

### PIPELAY / CABLELAY VESSEL





**SHIP DESIGN GROUP** *We improve shipbuilding*  
NAVAL ARCHITECTS . MARINE ENGINEERS . CONSULTANTS

## REFERENCES

### DREDGERS

- TSHD



- CUTTER-SUCTION





**SHIP DESIGN GROUP** *We improve shipbuilding*  
NAVAL ARCHITECTS . MARINE ENGINEERS . CONSULTANTS

## REFERENCES

### CARGO VESSELS

- BULK CARRIERS
- GENERAL GARGO
- CHEMICAL TANKERS





**SHIP DESIGN GROUP** *We improve shipbuilding*  
NAVAL ARCHITECTS . MARINE ENGINEERS . CONSULTANTS

## REFERENCES

## PROJECTS UNDER DEVELOPMENT





# SHIP DESIGN GROUP *We improve shipbuilding*

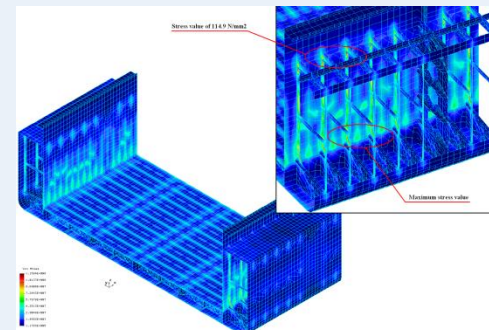
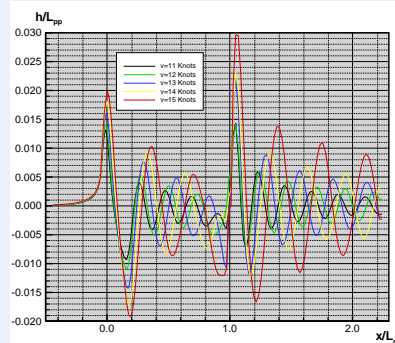
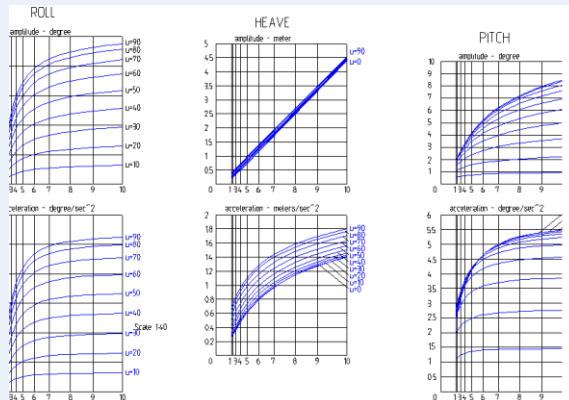
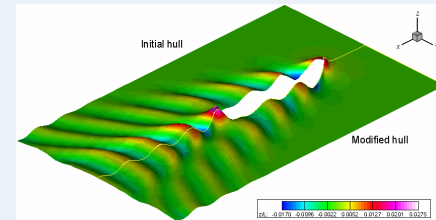
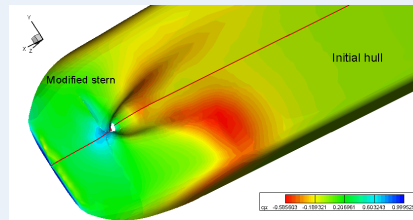
NAVAL ARCHITECTS . MARINE ENGINEERS . CONSULTANTS

## RESEARCH

IN COOPERATION WITH GALATI UNIVERSITY



- TOWING TANK EXPERIMENTS
- CFD SIMULATION
- SEAKEEPING
- FEM ANALYSIS





## RESEARCH

## EUROPEAN RESEARCH PROGRAMS



- EMship
- FP6 - IMPROVE:
- ERA-NET MANUNET EasySHIP
- FP7 - MoVeIT!
- FP7 - ADAM4EVE
- INNOVATIVE DANUBE VESSEL
- ISSC (INTERNATIONAL SHIP AND OFFSHORE STRUCTURES CONGRESS)
- RO-WATERBORNE
- ECMAR





***Thank you for your attention!***

